

Geometry Practice Quiz 8.1-8.3

Find the sum of the measures of the interior angles of the indicated convex polygon

① Dodecagon

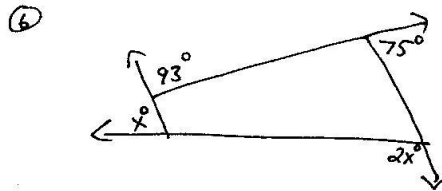
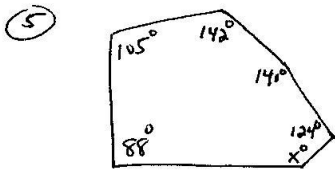
② 15-gon

The sum of the measure of the interior angles of a convex polygon is given. Classify the polygon by the number of sides.

③ 900°

④ 2520°

Find the value of x .



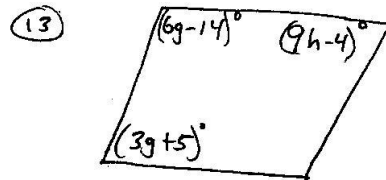
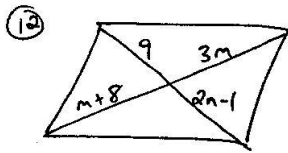
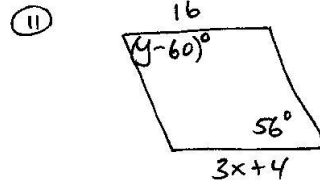
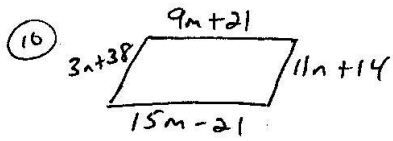
⑦ The measures of the interior angles of a convex quadrilateral are x° , $2x^\circ$, $4x^\circ$ and $5x^\circ$. What is the measure of the largest interior angle?

Find the measure of an interior angle and an exterior angle of the indicated polygon.

⑧ Regular 16-gon

⑨ Regular Hexagon

Find the value of each variable in the parallelogram.



For what value of x is the quadrilateral a parallelogram?

