

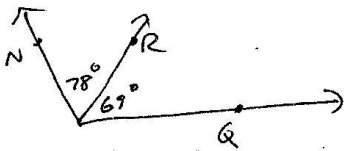
# Geom Practice Test Sec 1.4-1.5

Sketch the required angle

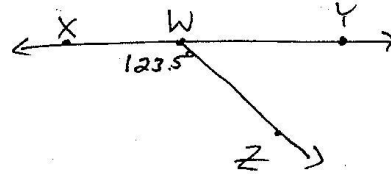
- ① Any acute angle      ② A right angle      ③ Any obtuse angle

Find the indicated angle measure.

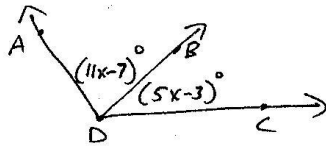
④  $\angle NPQ = \underline{\hspace{2cm}}$



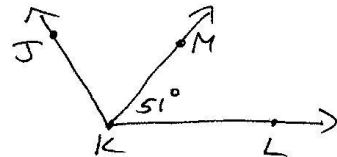
⑤  $\angle KWZ = \underline{\hspace{2cm}}$



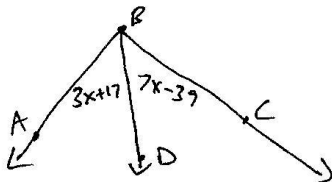
⑥ Given  $\angle ADC = 118^\circ$ , find  $\angle ADB$



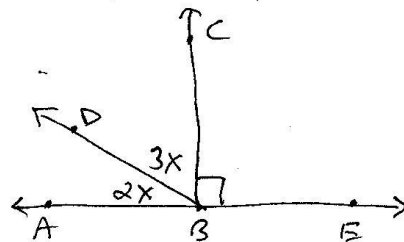
⑦ Given that  $\overrightarrow{KM}$  bisects  $\angle JKL$ , find the 2 angle measures not given



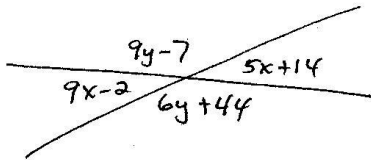
⑧  $\overrightarrow{BD}$  bisects  $\angle ABC$ . Find  $\angle ABC$



⑨ Find  $\angle ABD$  and  $\angle DBC$



⑩ Find  $x$  and  $y$



⑪ Two angles form a linear pair. The measure of one angle is 15 times the measure of the other angle. Find the measure of each angle.

Use the star at the right and the angles identified to name 2 pairs of the indicated types of angle pair.

⑫ Adjacent angles

⑬ Vertical Angles

⑭ Supplementary Angles

⑮ Linear pair

