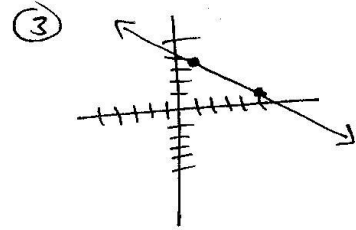
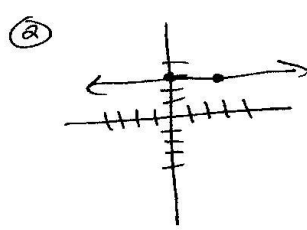
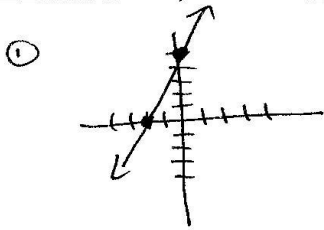


Alg 1 Practice Quiz Slope, Direct Variation

State the slope of the line



④ $(6, 4), (6, -1)$

⑤ $(8, -3), (-6, 5)$

⑥ $(8, 2), (14, 2)$

Find the value of y so that the line passing through the two points has the given slope

⑦ $(2, y), (3, 3), m = 2$

⑧ $(3, 5), (1, y), m = \frac{3}{2}$

The variables x and y vary directly. Find the constant of variation. Then write an equation that relates x and y . Use that equation to find the value of x .

⑨ If $x = 4$ when $y = 8$, find x when $y = 8$.

⑩ If $x = 4$ when $y = 3$, find x when $y = 12$.